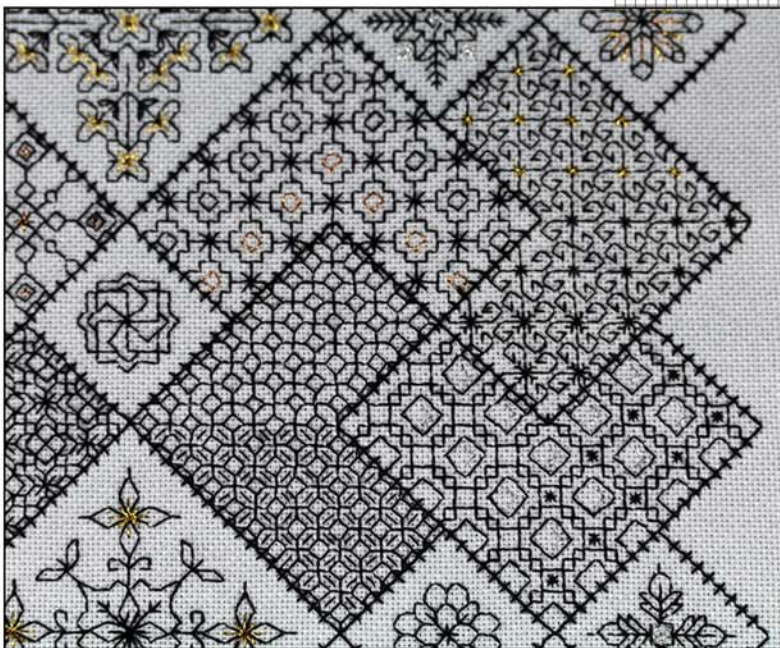
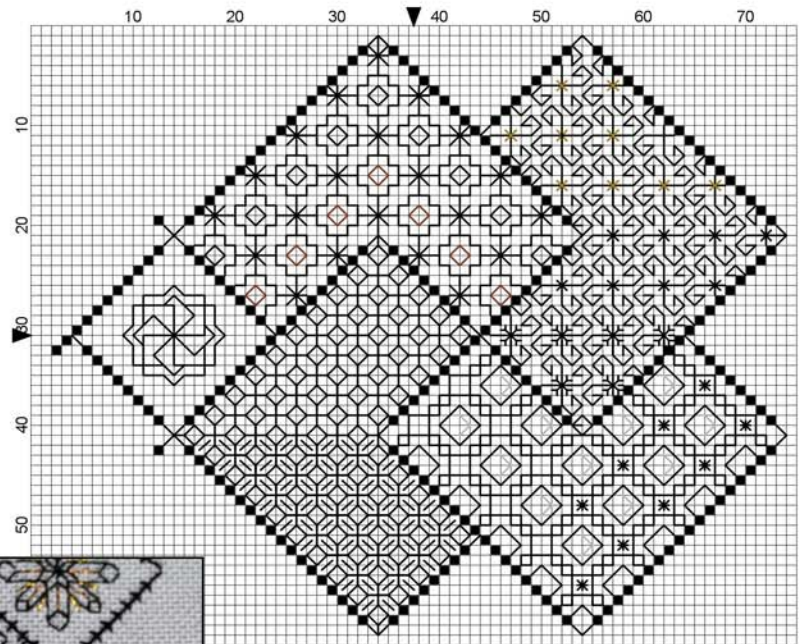


SAVE THE STITCHES

Blackwork Journey - Designs by Elizabeth Almond

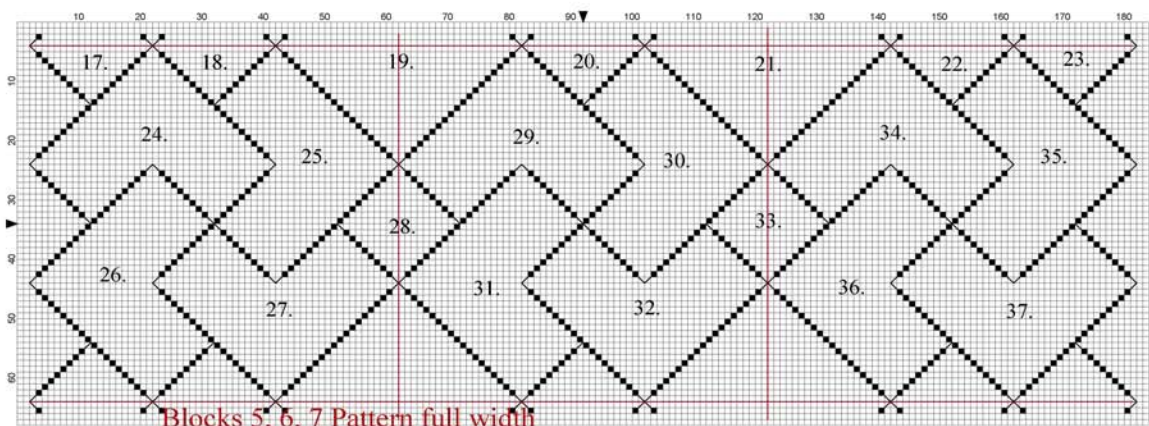
Block 7 Patterns 33 - 37

Chart



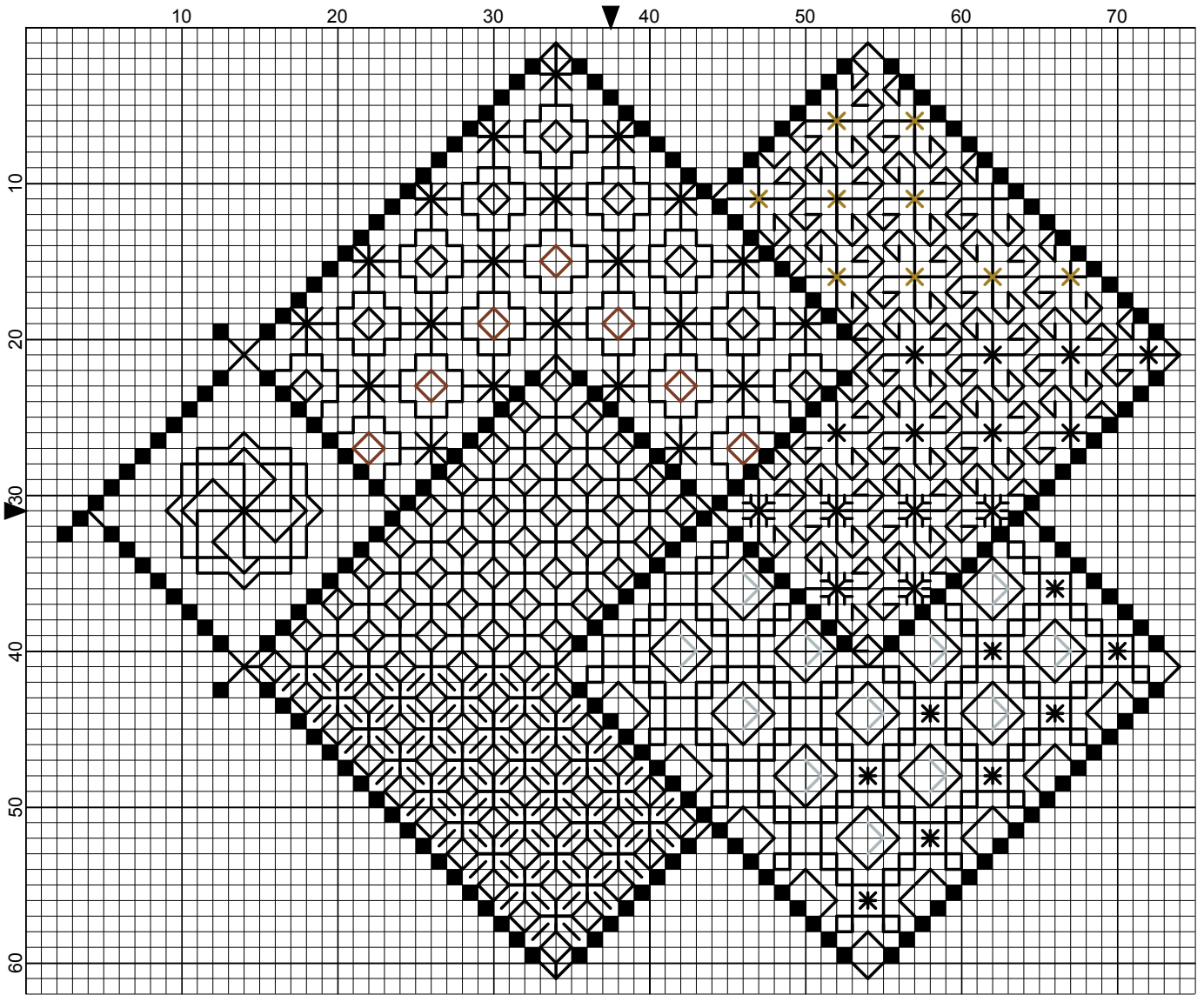
Embroidery

Full width of pattern



Blocks 5, 6, 7 Pattern full width

Save the Stitches Block 7 Patterns 33 - 37



Elizabeth Almond

Save the Stitches Block 7 Patterns 33 - 37

Author: Elizabeth Almond
Copyright: Elizabeth Almond
Grid Size: 75W x 62H
Design Area: 5.14" x 4.29" (72 x 60 stitches)

Legend:

■ [2] DMC-310 ANC-403 DLE- black

Backstitch Lines:

— DMC-310 black
— DLE-E301 Copper
— DLE-E3852 Dark Gold
— DLE-E415 Pewter

Block 7 Patterns 33 - 37

Following on from Block 6 insert the next five patterns into the numbered areas.

Stitches:

Cross Stitch

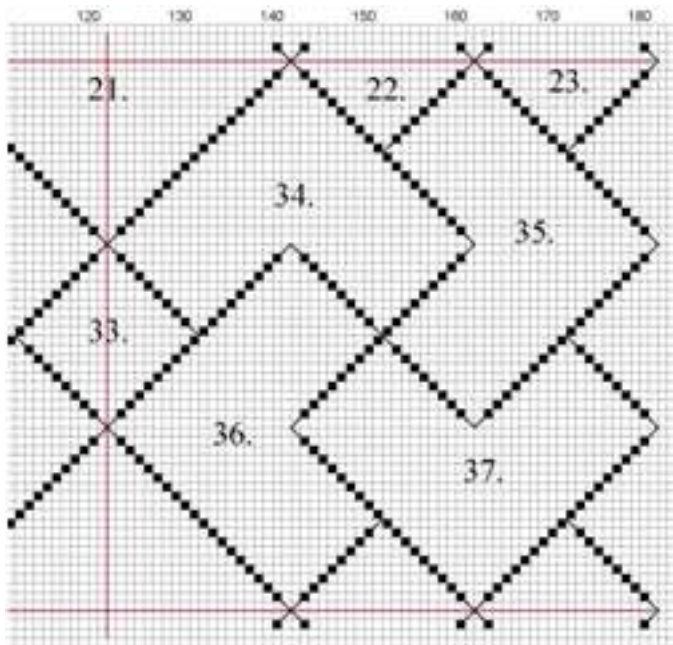
Back Stitch

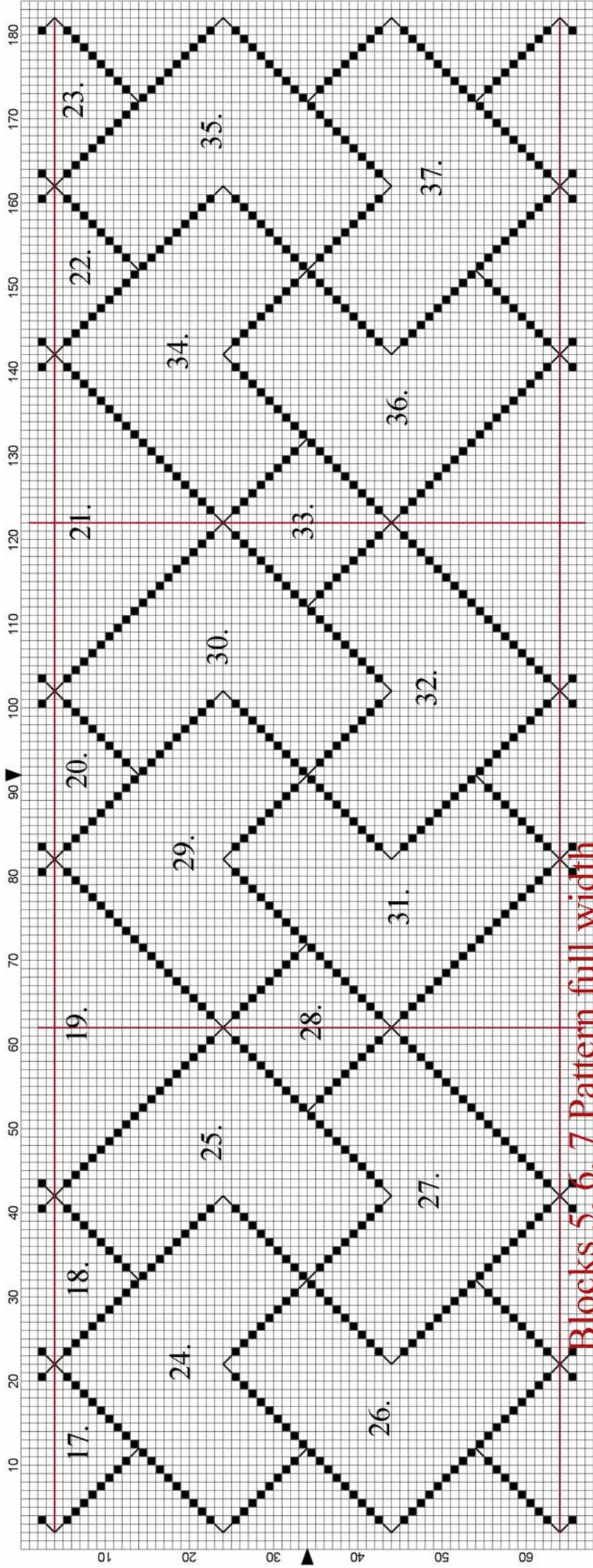
"Call outs" are metallic cross stitch

Cross stitch is worked in either DMC Cotton Pèrlé, or

DMC 310 Black, TWO strands (Frame - cross stitch)

Diaper filling patterns are worked in ONE strand of DMC 310 unless otherwise stated





Blocks 5, 6, 7 Pattern full width